

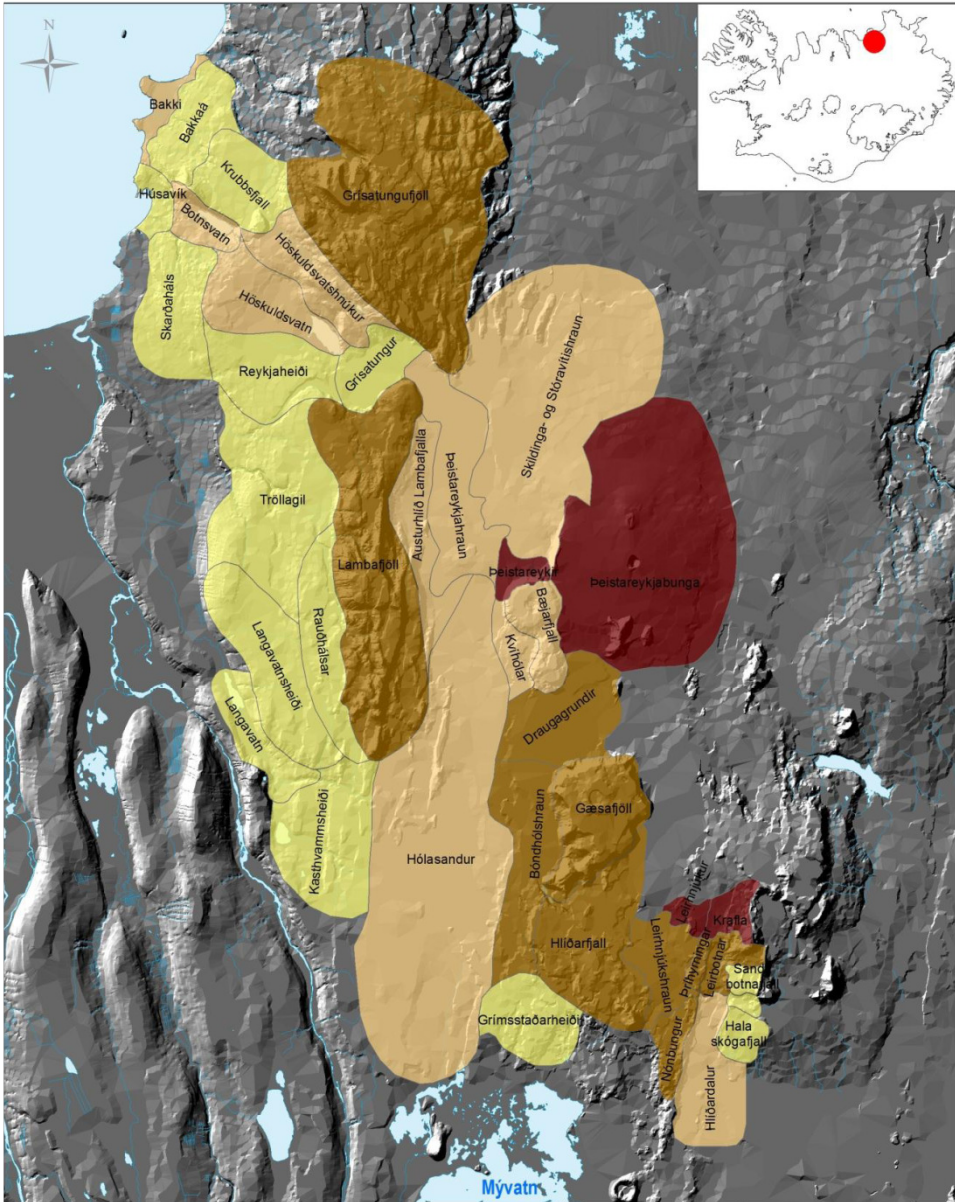
# Landscape analysis in NE Iceland



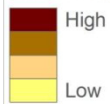
- **Dan Borgen Hasløv.**  
[dbh@hogk.dk](mailto:dbh@hogk.dk)  
Hasløv & Kjærsgaard,  
Arkitektfirma I/S,  
Danmark
- **Ingrid Sarlöv Herlin.**  
[ingrid.sarlov-herlin@slu.se](mailto:ingrid.sarlov-herlin@slu.se)  
Område  
landskapsarkitektur, SLU,  
Sweden

# Objectives;

- A one day "high speed visit"
- Expert opinion on the specific landscape analysis and LCA in relation to the area and the geothermal power plant project, including power plant in Theistareykir, Krafla II, power transmission lines and industry at Bakki
- To raise the awareness between EIA and the design outcome and the role of EIA for inspiration and increased quality

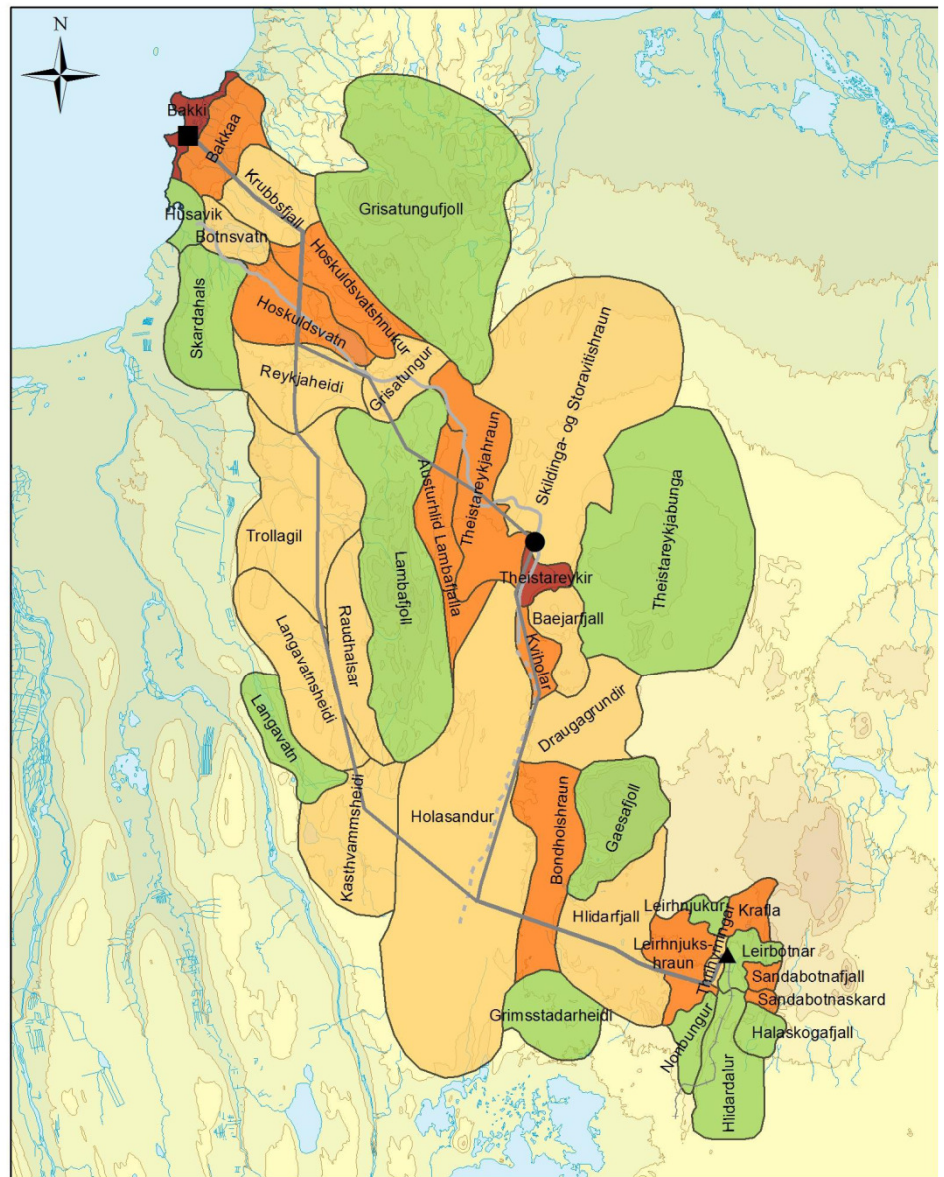


**Landscape character values**



References: LMI  
Coordinate System: ISN93  
Author: RHP  
Date: 01.09.2010

**Landscape character Values**



**Landscape character Impact**

- Insubstantial
- Somewhat negative
- Considerably negative
- Significantly negative

**Proposed projects**

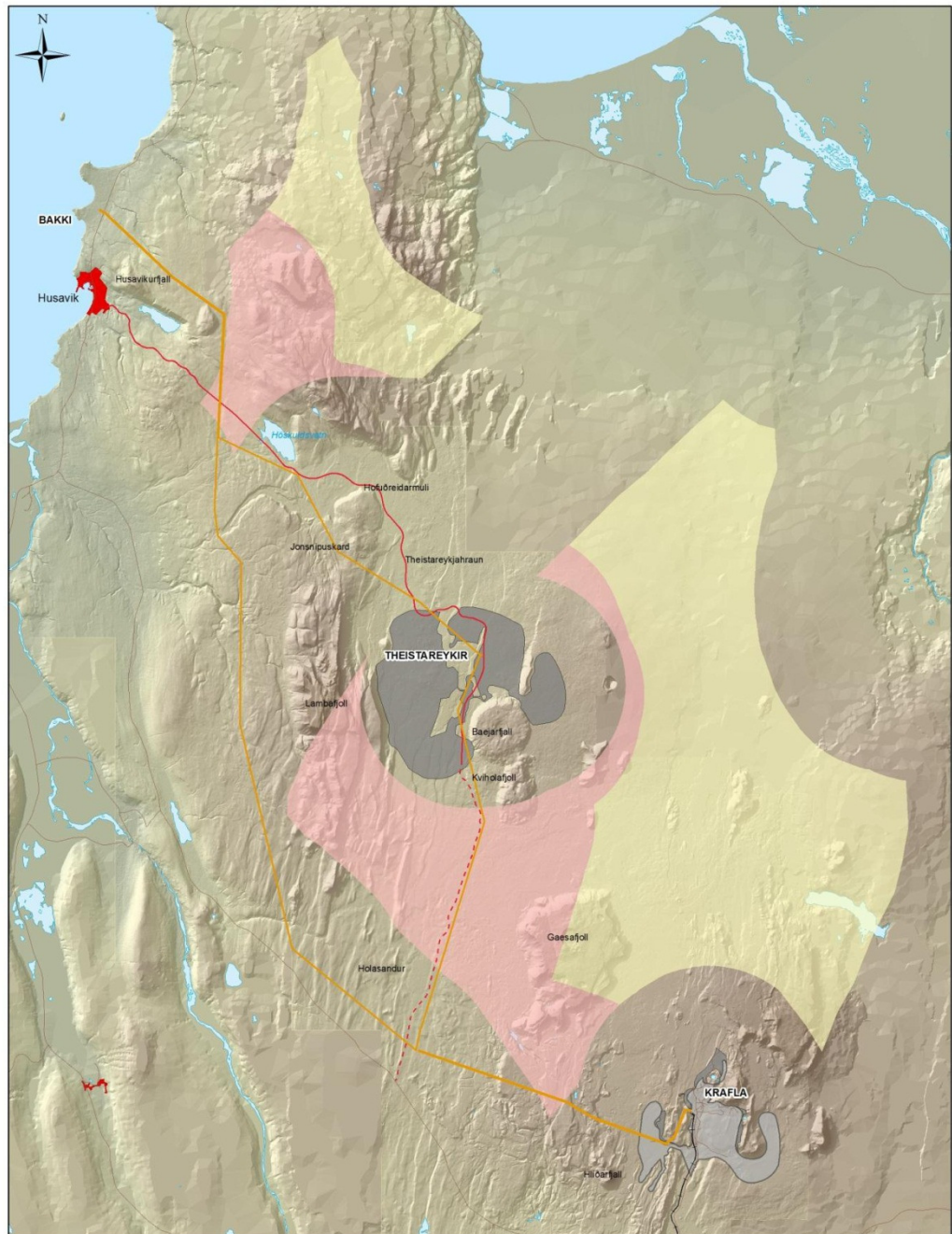
- Aluminum smelter at Bakki
- ▲ Krafla II geothermal power plant
- Theistareykir geothermal power plant
- Power transmission lines
- Sub-surface power cable (Krafla II)

- Proposed road
- Potential road

**Landscape character Impact**

References: LMI  
Hnitakerfi: ISN93  
Author: RHP  
Date: 14.07.2010





- Reduction of wilderness areas
- Wilderness areas remaining



Wilderness areas















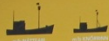




HÚSAVÍK ORIGINAL  
**WHALE  
WATCHING**

WITH *North Sailing*

VELKOMIN UM BORD - WELCOME ABOARD



North Sailing



[www.northsailing.is](http://www.northsailing.is) HÚSAVÍK ORIGINAL WHALE WATCHING



KVORN



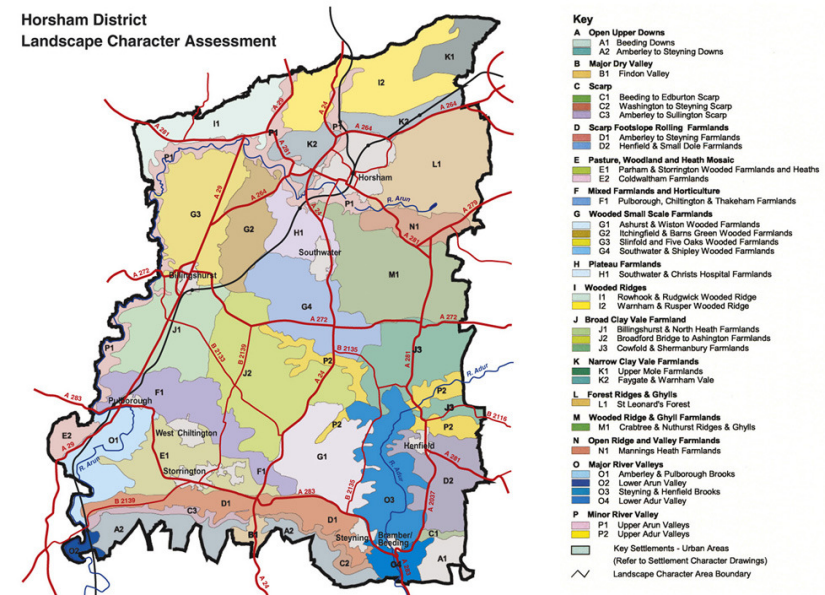






# Landscape Character as a framework for decision-making that respects local distinctiveness (the UK approach)

- 'a distinct, recognisable and consistent pattern of elements in the landscape that makes one landscape different from another, rather than better or worse'.
- that which makes an area unique.
- Landscape Character Assessment (LCA) is an approach to understanding the differences between landscapes:
  - can serve as a framework for decision-making that respects local distinctiveness.
  - It is a way of 'unpacking' the landscape and understanding how its distinctive elements contribute to sense of place.
  - LCA can be a tool for engaging stakeholders in sustainable development.



# Recommendations

- Towards a more holistic landscape perspective! What about perception, archeology, cultural history, immaterial values?
- Clarify underlying values, criteria for judgement
- What about the boundaries between the different "values"?
- What about priorities of stages and alternatives?
- More realistic and discussing visualization!
- How can LCA support the integration of the design in the existing landscape?
- Recommendations for the detailed design?
- Include tourism!
- Husavik needs new ideas!